

This week's astounding discovery is:

The Tail Trail



When you meet the animals of Mill Farm, what do you look at first ?

The big dark eyes? The teeth?, The beak? Or the big wet nose? You probably don't even notice what's at the other end of the animal.

Here are some pictures of our animal's tails. Write down who you think they belong to, then go and meet the animals to see if you're right.



Feathery and white.
Who does this tail belong to? ?

.....



Soft and furry with a
flash of white
beneath. Who does
this tail belong to?

.....



Long and curvy; but
stand clear when it
sticks straight out.
Who does this tail
belong to?

.....



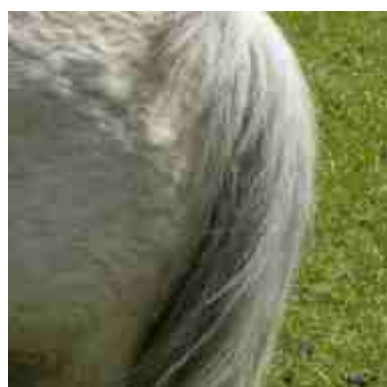
Looking rather odd
without wool around
it. Who does this tail
belong to?

.....



A bristly stump that
loops the loop. Who
does this tail belong
to?

.....



Long, flowing and
luxuriant. Who does
this tail belong to?

.....



Long, scraggly and
brown. Who does this
tail belong to?

.....



Smart and practical.
Who does this tail
belong to ?

.....

Draw a Tail on a Goat



These silly goats have lost their tails. Take your crayons and draw a brand new tail on each goat.

Use your imagination. You could draw a bushy tail like a fox, a curly tail like a monkey, or even a scaly green tail like a crocodile.